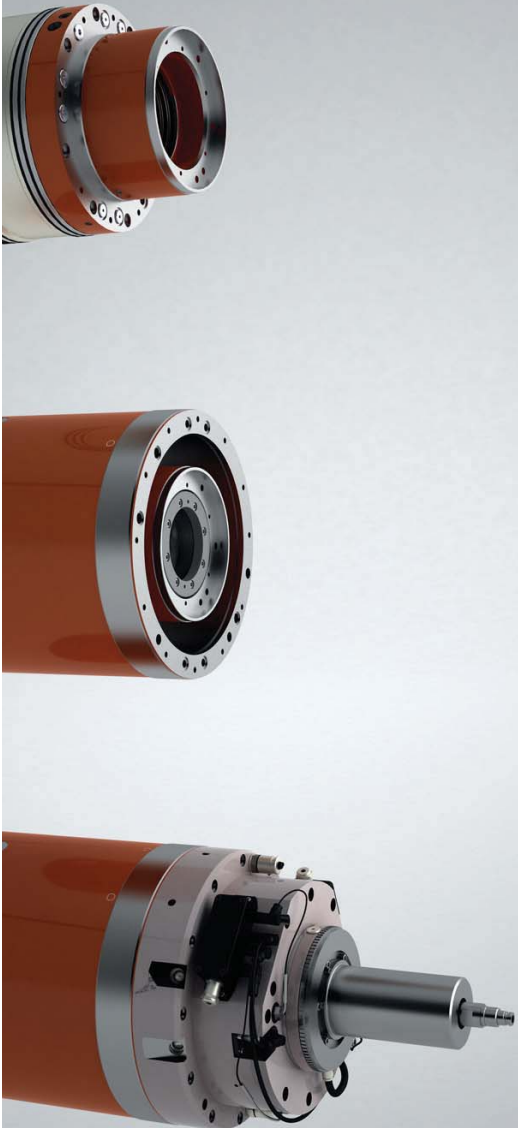


RAM SIZE 220



S1 - 100%

| | | |
|--------|------------|--------------|
| Speed | N1B | [rpm] |
| Power | P | [kW] |
| Torque | T2N | [Nm] |

| | Gear 1:1 | | Gear 5:1 | |
|--------|----------|------|----------|------|
| Speed | 1500 | 9000 | 300 | 1800 |
| Power | 43.7 | 43.7 | 42.4 | 42.4 |
| Torque | 278 | 46 | 1349 | 225 |

S6 - 40%

| | | |
|--------|------------|--------------|
| Speed | N1B | [rpm] |
| Power | P | [kW] |
| Torque | T2N | [Nm] |

| | Gear 1:1 | | Gear 5:1 | |
|--------|----------|------|----------|------|
| Speed | 1500 | 9000 | 300 | 1800 |
| Power | 60.9 | 60.9 | 59.1 | 59.1 |
| Torque | 388 | 65 | 1880 | 313 |

Technical Features

| | |
|--------------------------|---------------|
| Mounting position | |
| Control | |
| Interface | |
| Cooling/Flow rate | [l/mn] |
| Cooling/Loss power | [kW] |
| Bearings lubrication | |
| Lubrication/Flow rate | [l/mn] |
| Lubrication/Loss power | [kW] |
| Speed shifting/Pressure | [bar] |
| Speed shifting/Flow rate | [l/mn] |

| | |
|--------------------------|------------------------------------|
| Mounting position | Vertical, horizontal and Swiveling |
| Control | Siemens/Fanuc/Heidenhain |
| Interface | Internal splines |
| Cooling/Flow rate | 35 |
| Cooling/Loss power | 1.31 |
| Bearings lubrication | Grease |
| Lubrication/Flow rate | 2 |
| Lubrication/Loss power | 0.61 |
| Speed shifting/Pressure | 50 to 100 |
| Speed shifting/Flow rate | 5 to 7 |

RAM design for external forced lubrication

| |
|---|
| Gearbox only |
| Gearbox + Cooling Jacket |
| Gearbox + Cooling Jacket + output shaft arrangement |

Interface

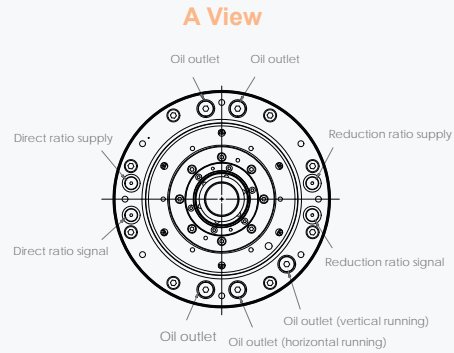
| | |
|-----|--|
| HIT | |
| FOT | |
| FOA | |



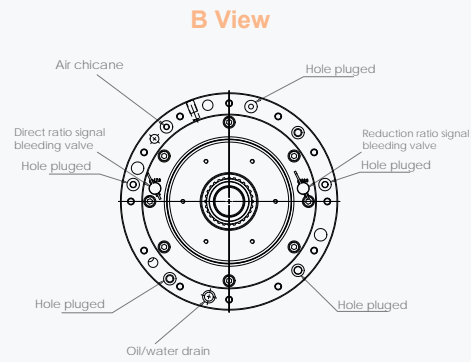
RAM SIZE 220

DIMENSIONS

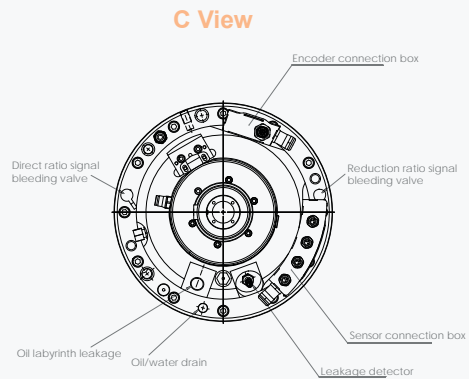
HIT



FOT



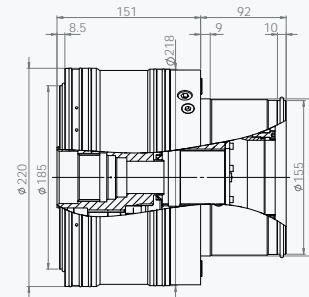
FOA



DIMENSIONS

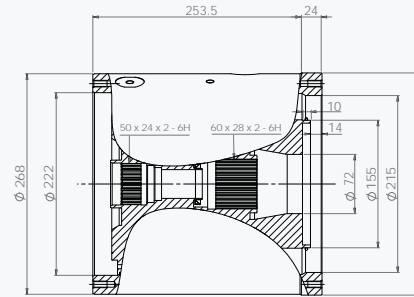
GM 1300

RAM 220



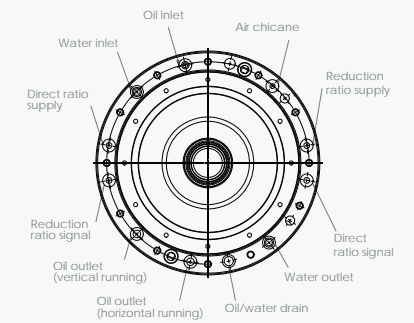
A

D

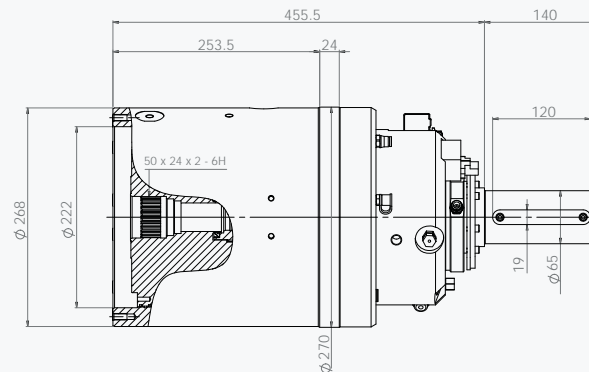


B

D View



D



C