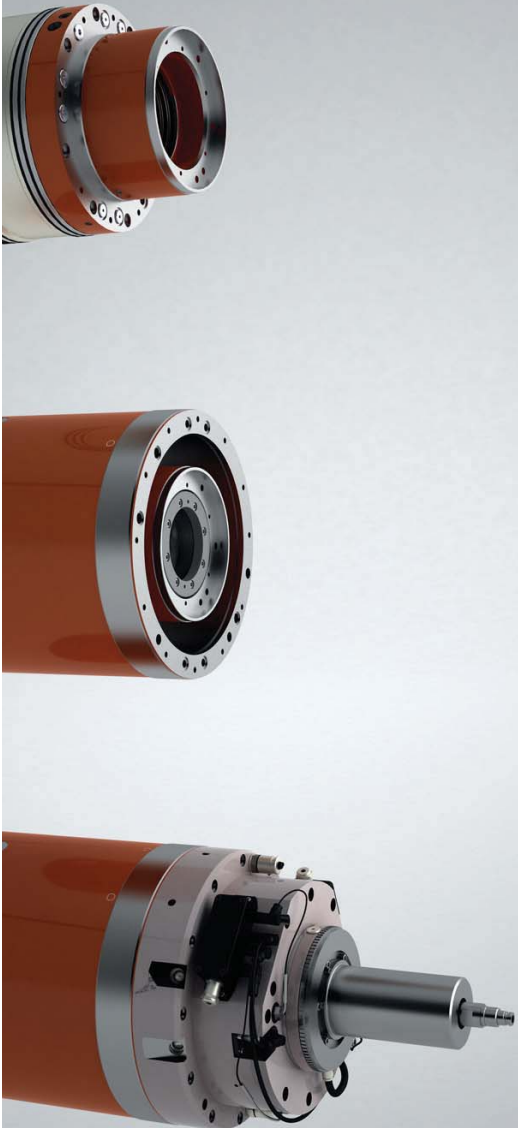


RAM SIZE 190



S1 - 100%

Speed	N1B	[rpm]
Power	P	[kW]
Torque	T2N	[Nm]

Gear 1:1		Gear 5:1	
Speed	1500 12000	300 2400	
Power	25.6 25.6	24.8 24.8	
Torque	163 20	790 99	

S6 - 40%

Speed	N1B	[rpm]
Power	P	[kW]
Torque	T2N	[Nm]

Gear 1:1		Gear 5:1	
Speed	1500 12000	300 2400	
Power	35.6 35.6	34.5 34.5	
Torque	227 28	1100 137	



Technical Features

Mounting position	
Control	
Interface	
Cooling/Flow rate	[l/min]
Cooling/Loss power	[kW]
Bearings lubrication	
Lubrication/Flow rate	[l/min]
Lubrication/Loss power	[kW]
Speed shifting/Pressure	[bar]
Speed shifting/Flow rate	[l/min]

Mounting position	Vertical, horizontal and Swiveling
Control	Siemens/Fanuc/Heidenhain
Interface	Internal splines
Cooling/Flow rate	25
Cooling/Loss power	0.77
Bearings lubrication	Grease
Lubrication/Flow rate	1.5
Lubrication/Loss power	0.46
Speed shifting/Pressure	50 to 100
Speed shifting/Flow rate	5 to 7

RAM design for external forced lubrication

Interface

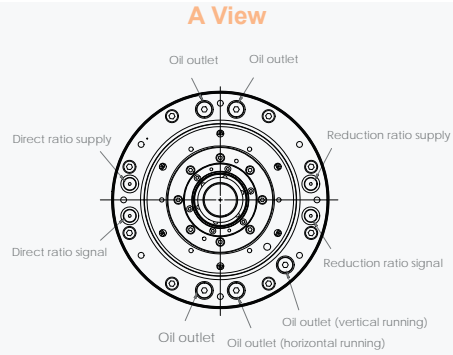
Gearbox only
Gearbox + Cooling Jacket
Gearbox + Cooling Jacket + output shaft arrangement

HIT	
FOT	
FOA	

RAM SIZE 190

DIMENSIONS

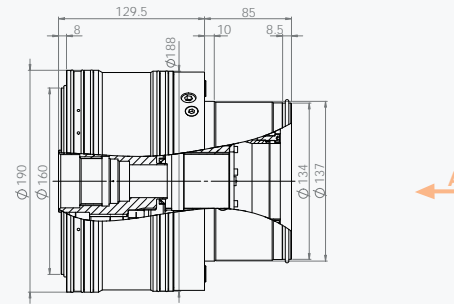
HIT



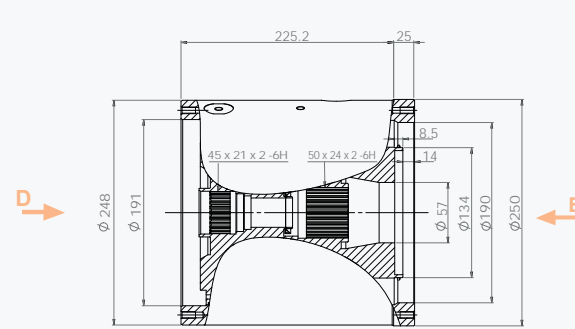
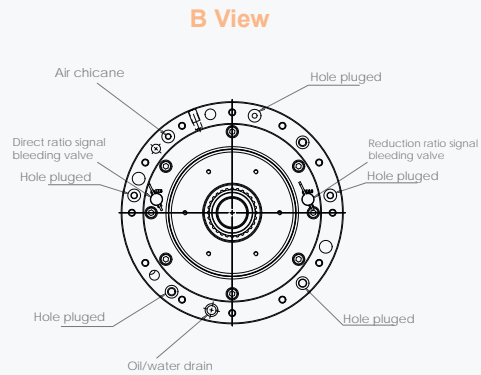
DIMENSIONS

GM 800

RAM 190



FOT



FOA

