

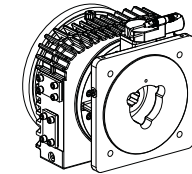
MSD SIZE 60

Technical Features

Rated output torque (S1-100%)
Max input speed
Reduction ratio
Motor frame size
Gearbox housing dimensions
Torsional backlash
Thermal capacity
Efficiency

	SIZE	603	604	606
T _{2N}	[Nm]	2200	2930	4400
N _{1B}	[rpm]	5000		
i		1.00 & 3.83 1.00 & 4.94 ⁽¹⁾		
	[mm]	180/200/225		
	[mm]	420 x 380		
-	[arcmin]	30		
P	[kW]	External forced cooling		
η	%	97		

⁽¹⁾ Only available with 4 planets



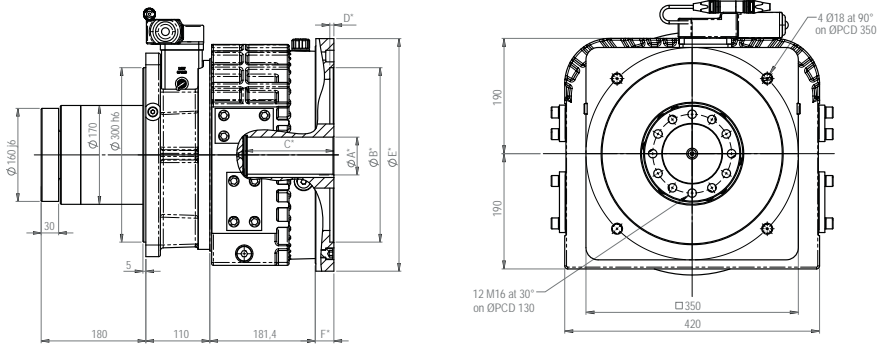
*Example: MSD 60
INPUT - A/F . OUTPUT - C

Interface

	INPUT		OUTPUT
Input without sealing ring	A		A Std Flange shaft
Input and output bearing arrangement	F		B Std plain Shaft
Input with sealing ring	B		C Slide dog free

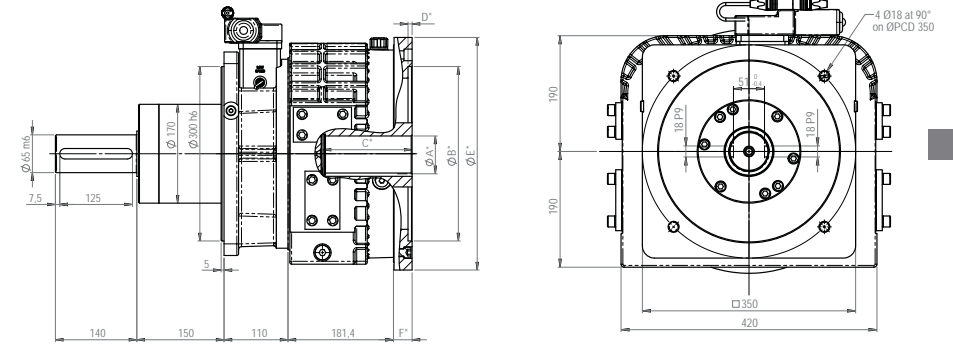
DIMENSIONS

INPUT - TYPE A/F
OUTPUT - TYPE A

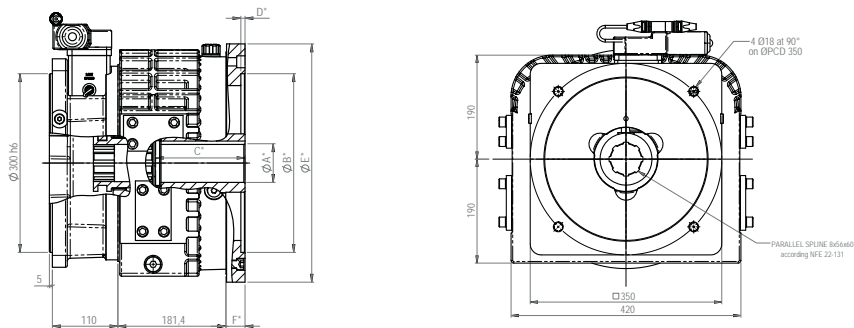


DIMENSIONS

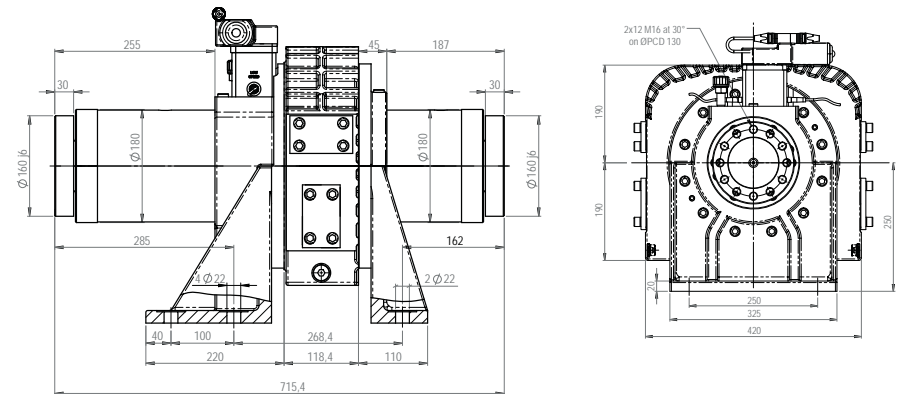
INPUT - TYPE A/F
OUTPUT - TYPE B



INPUT - TYPE A/F
OUTPUT - TYPE C



INPUT - TYPE B
OUTPUT - TYPE A



* A B C D E F According to motor dimensions

* A B C D E F According to motor dimensions