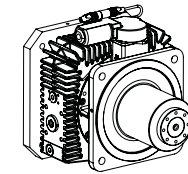


MSD SIZE 35

Technical Features

Rated output torque (S1-100%)
Max input speed
Reduction ratio
Motor frame size
Gearbox housing dimensions
Torsional backlash
Thermal capacity
Efficiency

	SIZE	353	354 ^(*)	356
T2N	[Nm]	620	825	1240
N1B	[rpm]	6000		
i		1.00 & 3.83 1.00 & 4.94 ^(**)		
	[mm]	132/160		
	[mm]	315 x 289		
-	[arcmin]	30		
P	[kW]	28		
η	%	97		



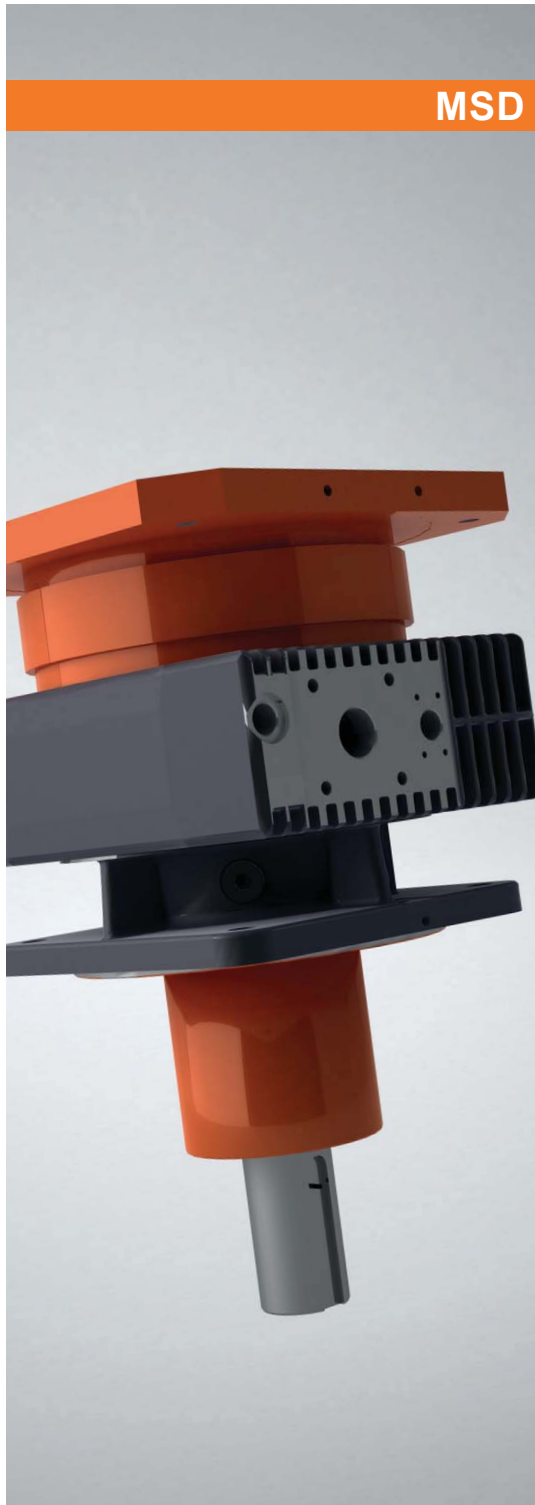
*Example: MSD 35
INPUT - A/F . OUTPUT - A

^(*) For size 354, the rated output torque is 1249 Nm when ratio is 4.94

^(**) Only available with 4 planets

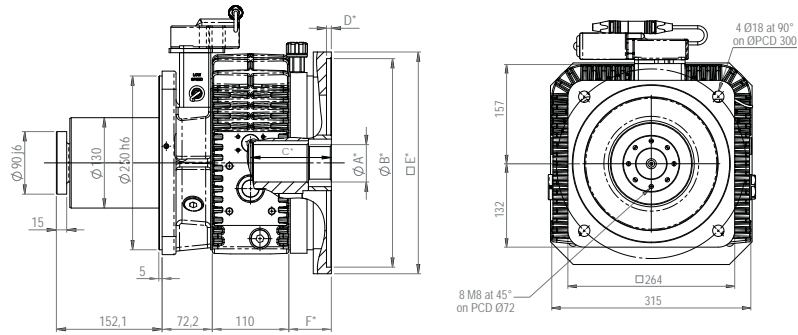
Interface

	INPUT		OUTPUT
Input without sealing ring	A		A Std Flange shaft
Input and output bearing arrangement	F		B Std plain Shaft
Input with sealing ring	B		C Slide dog free



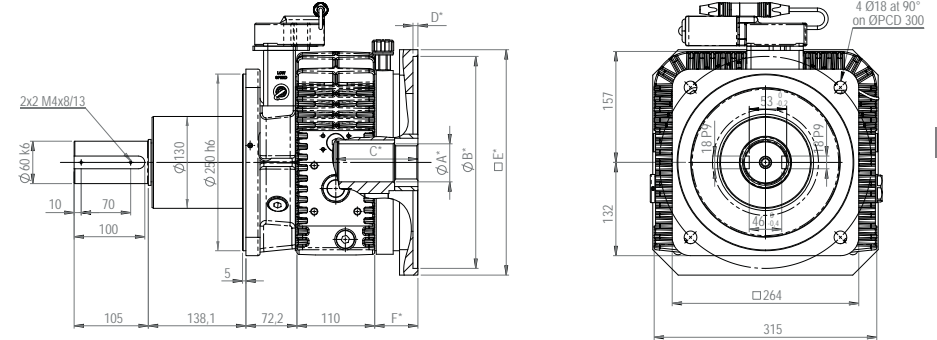
DIMENSIONS

INPUT - TYPE A/F
OUTPUT - TYPE A

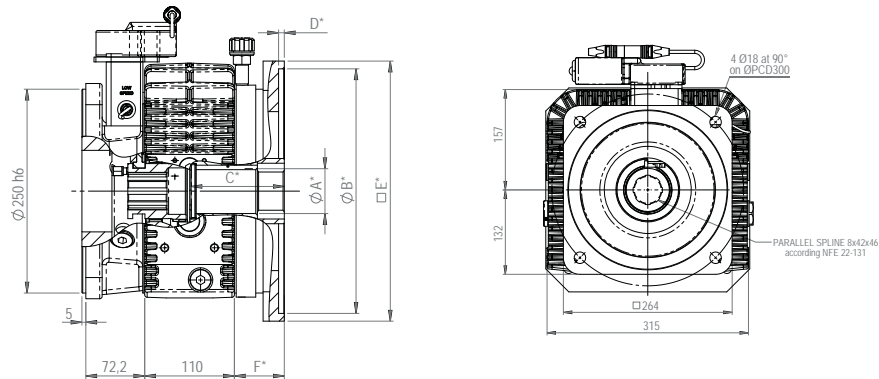


DIMENSIONS

INPUT - TYPE A/F
OUTPUT - TYPE B



INPUT - TYPE A/F
OUTPUT - TYPE C



* A B C D E F According to motor dimensions

* A B C D E F According to motor dimensions