

DRP SIZE 3

DRP3	
Weight	
Efficiency	
Backlash	
Color	

General data

		M	R
m	kg	1 Stage	
		2 Stages	294 300
η	%	1 Stage	
		2 Stages	93 91
J	arcmin	Standard	3 4
		Reduced	1 2
Color		RAL2012	

Tooth type	
Module	
Helix angle (left)	
Number of teeth	
Pressure angle	
Theoretical pitch diameter	
Addendum modification factor	
Pinion quality grade	
Surface hardness	

Pinion features

		Helical	Straight
Mo	mm	5	5
β	deg	19°31'42"	0°
Z2	-	18	19
α	deg	20°	20°
D02	mm	95,49	95
x0	-	0,251	0,300
Q	(ISO 1328)	6	6
HRC	HRC	61-63	61-63

Rack features

Version			Helical	Straight
	Standard	F2B	N	44837
	F2NOT	N	89674	67410
	Material		C45E DIN 1.1191	
Reinforced	F2B	N	55062	N/A
	F2NOT	N	119700	N/A
	Material		16MnCr5	
Available length	L	mm	500, 1000, 2000	
Dimensions	see details p113-115			

Ratio	
Nominal feed force	
Peak acceleration feed force	
Max. acceleration feed force	
E-stop force	
Max. linear speed	
Nominal linear speed	
Linear stiffness on the rack	
Inertia	

Drive linear features

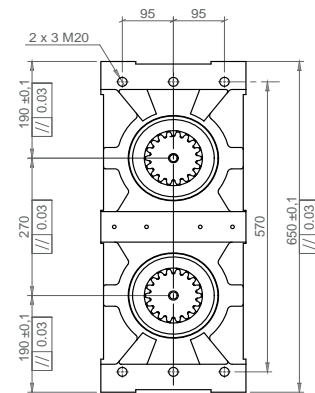
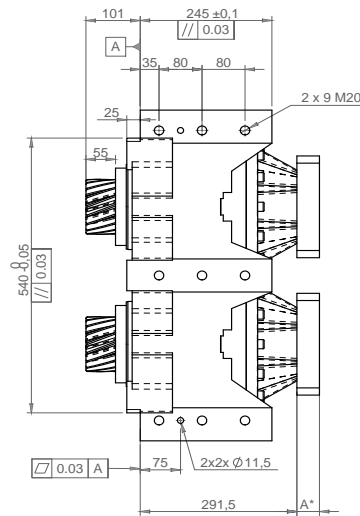
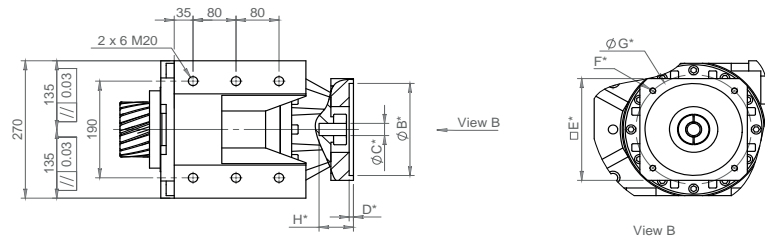
		5	7	10	17	21	31	46	61	91
F2N	N				38748	31417	46078	29532	32255	32255
F2B	N				67861	54980	80637	51691	56446	56446
F2B_max	N				135721	109959	161273	103383	112891	112891
F2NOT	N				103676	103676	103676	103676	103676	103676
V2B	m/min				88	71	48	33	25	16
V2N	m/min				28	23	15	10	8	5
K2T +M	N/μm				437	426	409	399	387	421
K2T +R	N/μm					363	368	374	385	382
I +M	kg.mm²				1242	994	846	773	666	647
I +R	kg.mm²					2527	2378	2305	2199	2180

Ratio	
Nominal output torque	
Max. output torque	
No load torque	
No load torque	
E-stop torque	
Max. input speed	
Nominal input speed	
Radial stiffness	
Axial stiffness	
Torsional stiffness	

DRP ratings

		5	7	10	17	21	31	46	61	91
T2N	Nm				1850	1500	2200	1410	1540	1540
T2B	Nm				3240	2625	3850	2468	2695	2695
T01 +R	Nm					2,8	2,8	2,8	2,8	2,8
T01 +M	Nm				2,5	2,5	2,5	2,5	2,5	2,5
T2NOT	Nm				4950	4950	4950	4950	4950	4950
n1B	rpm				5000	5000	5000	5000	5000	5000
n1N	rpm				1600	1600	1600	1600	1600	1600
K2R	N/μm				1100	1100	1100	1100	1100	1100
K2A	N/μm				4355	4355	4355	4355	4355	4355
C2t +R	Nm/ rad					1354472	1505733	1423227	1498858	1478231
	Nm/arcmin					394	438	414	436	430
C2t +M	Nm/ rad				1873572	1787628	1663869	1588239	1512609	1753251
	Nm/arcmin				545	520	484	462	440	510

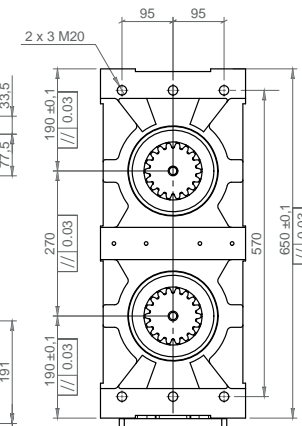
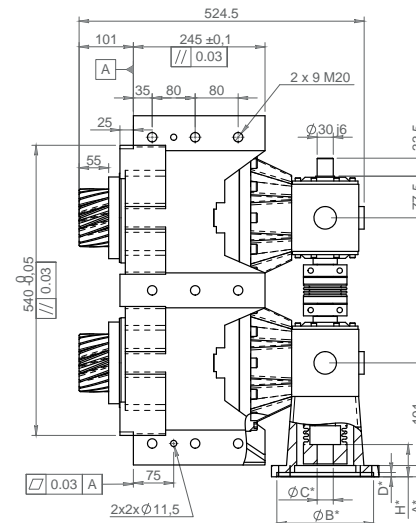
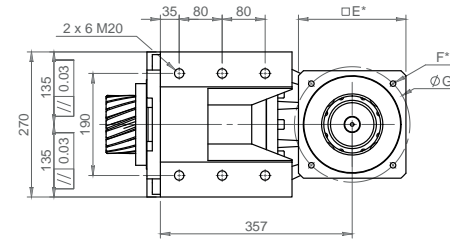
DIMENSIONS - TYPE M



	IFB 140 14/24	IFB 140 28/38	IFB 200 28/38	IFB 260 28/38
A	37	42	57	64
E	140	140	200	260
H	59	65	80	87

*B C D F G According to motor dimensions
Tapping depth = 1.5xØ thread

DIMENSIONS - TYPE R



	MF3 140	MF3 200	MF3 260
A	21	21	24
E	140	200	260
H	80	80	83

*B C D F G According to motor dimensions
Tapping depth = 1.5xØ thread

Dimensions and main data for information only - Please consult us and / or refer to Products Datasheets
For accurate selection, contact your local supplier