

DRP SIZE 1

DRP1	
Weight	
Efficiency	
Backlash	
Color	

		M	R
m	kg	1 Stage	
		2 Stages	109 115
η	%	1 Stage	
		2 Stages	93 91
J	arcmin	Standard	3 4
		Reduced	1 2
		RAL2012	

Tooth type	
Module	
Helix angle (left)	
Number of teeth	
Pressure angle	
Theoretical pitch diameter	
Addendum modification factor	
Pinion quality grade	
Surface hardness	

		Helical	Straight
Mo	mm	3	3
β	deg	19°31'42"	0°
Z2	-	18	19
α	deg	20	20
D02	mm	57,3	57
x0	-	0,118	0,167
Q	(ISO 1328)	6	6
HRC	HRC	61-63	61-63

Rack features

Version		Helical	Straight
Standard	F2B	N	15939 13766
	F2NOT	N	31878 23940
	Material		C45E DIN 1.1191
Reinforced	F2B	N	19562 N/A
	F2NOT	N	48904 N/A
	Material		16MnCr5
Available length	L mm		500, 1000, 2000
Dimensions			see details p113-115

Ratio	
Nominal feed force	
Peak acceleration feed force	
Max. acceleration feed force	
E-stop force	
Max. linear speed	
Nominal linear speed	
Linear stiffness on the rack	
Inertia	

Drive linear features

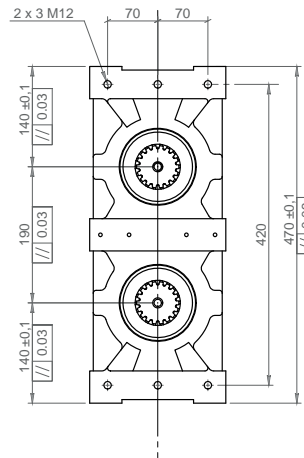
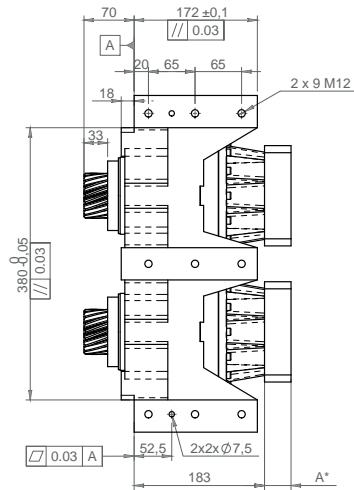
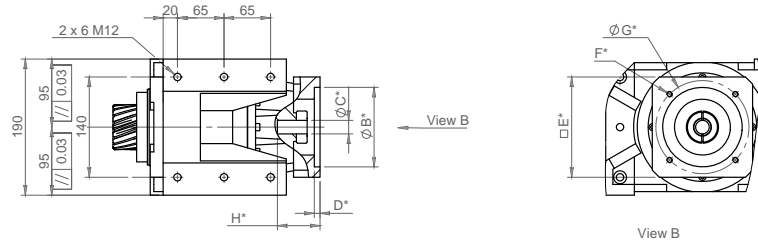
		5	7	10	17	21	31	46	61	91
F2N	N	13613	10646	15009	9424	13089	9424	13089	9424	9424
F2B	N	23839	18639	26283	16510	22897	16510	22897	16510	16510
F2B_max	N	47679	37277	52565	33019	45794	33019	45794	33019	33019
F2NOT	N	29075	29075	29075	29075	29075	29075	29075	29075	29075
V2B	m/min	64	51	35	23	18	12	18	12	12
V2N	m/min	28	22	15	10	8	5	10	8	5
K2T +M	N/μm	190	190	178	170	173	185	170	173	185
K2T +R	N/μm		169	176	169	173	185	169	173	185
I +M	kg.mm²	287	269	259	254	246	245	254	246	245
I +R	kg.mm²		458	448	443	435	433	443	435	433

Ratio	
Nominal output torque	
Max. output torque	
No load torque	
No load torque	
E-stop torque	
Max. input speed	
Nominal input speed	
Radial stiffness	
Axial stiffness	
Torsional stiffness	

DRP ratings

		5	7	10	17	21	31	46	61	91
T2N	Nm	390	305	430	270	375	270	375	270	270
T2B	Nm	683	534	753	473	656	473	656	473	473
T01 +R	Nm		1,5	1,5	1,5	1,5	1,5	1,5	1,5	1,5
T01 +M	Nm	1	1	1	1	1	1	1	1	1
T2NOT	Nm	833	833	833	833	833	833	833	833	833
n1B	rpm	6000	6000	6000	6000	6000	6000	6000	6000	6000
n1N	rpm	2600	2600	2600	2600	2600	2600	2600	2600	2600
K2R	N/μm	480	480	480	480	480	480	480	480	480
K2A	N/μm	1710	1710	1710	1710	1710	1710	1710	1710	1710
C2t +R	Nm/ rad		237205	254393	237205	247518	278457	237205	247518	278457
	Nm/arcmin		69	74	69	72	81	69	72	81
C2t +M	Nm/ rad		292208	292208	261269	240642	247518	278457	247518	278457
	Nm/arcmin		85	85	76	70	72	81	72	81

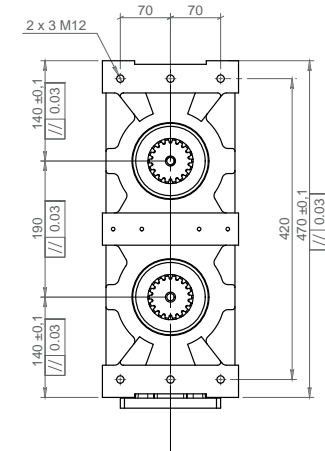
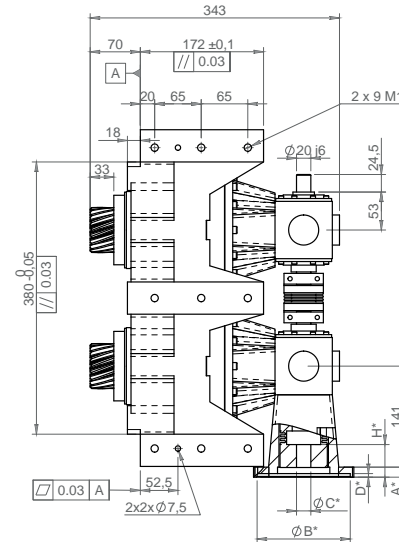
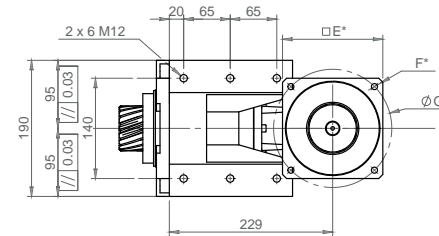
DIMENSIONS - TYPE M



	IFA 100 11/19	IFA 140 11/19	IFA 140 22/32	IFA200 22/32
A	27	27	37	42
E	100	140	140	200
H	49	49	59	64

*B C D F G According to motor dimensions
Tapping depth = 1.5x0 thread

DIMENSIONS - TYPE R



	MF1 100	MF1 140	MF1 200
A	14	14	18
E	100	140	200
H	62	62	66

*B C D F G According to motor dimensions
Tapping depth = 1.5x0 thread

Dimensions and main data for information only - Please consult us and / or refer to Products Datasheets
For accurate selection, contact your local supplier